

IBMA supports the goal of the SUD of achieving the sustainable use of pesticides by promoting the use of integrated pest management (IPM), but to be effective, there must be mandatory full implementation of IPM. Examples of successful IPM programmes that use biocontrol over thousands of hectares are available at:

[www.ibmabiocontrolsuccess.org](http://www.ibmabiocontrolsuccess.org)

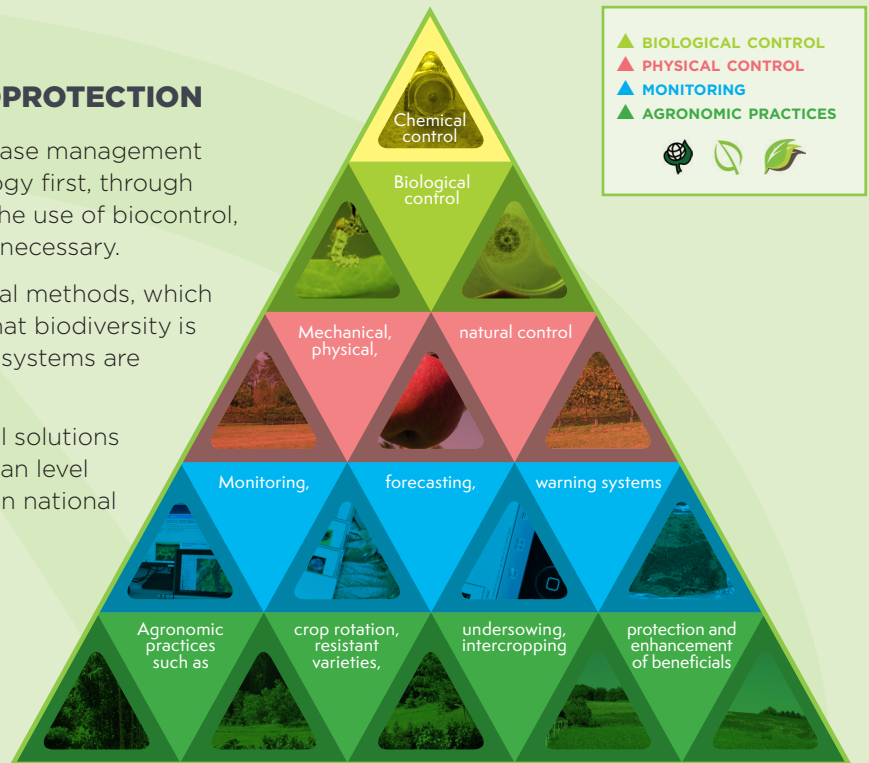


## 1 DEFINE IPM AND BIOPROTECTION

IPM means a pest and disease management programme that puts biology first, through agronomic decisions and the use of biocontrol, and uses chemistry only if necessary.

IPM prioritises non-chemical methods, which include bioprotection so that biodiversity is regenerated and cropping systems are made more resilient.

Bioprotection or biocontrol solutions must be defined at European level and the definition applied in national legislation.



## 2 SYSTEMATICALLY MONITOR AND MEASURE THE ADOPTION OF IPM

Farmers need tools and need to see progress in availability of non-chemical solutions such as bioprotection. Bioprotection use is a relevant parameter for measurement of IPM adoption.

## 4 PROVIDE INCENTIVES FOR PROGRESSING TOWARDS AND REACHING TARGETS

IPM implementation must be incentivised for farmers and progress reported and measured. Advisory services also need incentivising to recommend IPM and bioprotection.



## 3 SET SPECIFIC AND AMBITIOUS ADOPTION TARGETS

Create positive targets for bioprotection. NAPs need to include a specific relevant target for bioprotection uptake in each MS. IBMA advocates a 75% target for bioprotection at EU level to achieve the agroecological transition.

## 5 TRAINING AND COMMUNICATION ABOUT IPM AND BIOPROTECTION

Farmers and advisers need training in the implementation of IPM and the use of bioprotection and other non-chemical methods.

